

Assemble-able Battery

SDA10-4820



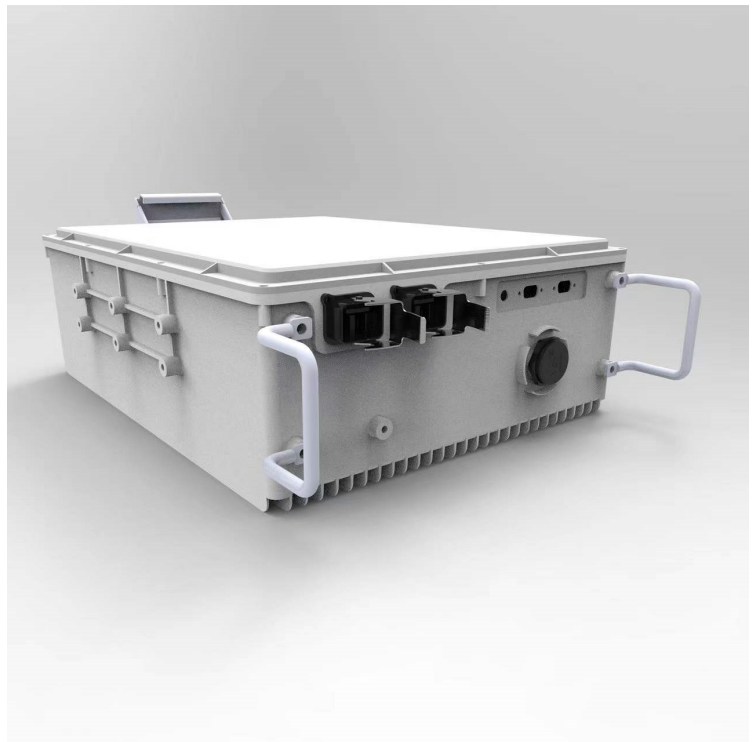
shoto`

Feature

- High energy density, small weight and volume, easy to handle
- Excellent high current discharge performance
- Excellent cycle life (6 times that of ordinary batteries), reducing operation and maintenance costs
- High charging and discharging efficiency, charging efficiency $\geq 97\%$
- Excellent constant power discharge performance
- Support wide working temperature range, support $-40^{\circ}\text{C} \sim 55^{\circ}\text{C}$
- Suitable for application scenarios such as avoiding hanging, holding poles, angle steel towers, etc.
- Waterproof and anti-reverse plug terminals, plug and work, fast installation
- IP level: IP65
- Natural heat dissipation design, no fan, no noise, no maintenance, long life
- Optional function: anti-theft, dry contact

Application scenario

- 5G distributed micro base station
- Small-capacity distributed sites in stub networks
- Transmission site
- Other low-power sites



Introduction

SDA10-4820 series lithium iron phosphate battery system is a new intelligent unattended backup power supply product. The product has the characteristics of safety, reliability, centralized monitoring, convenient installation and maintenance, and long cycle life. This product is suitable for various types of stability and semi-stable power grid areas. It is mainly used in communication 5G power supply systems and new energy storage systems.

Passion for Storage
and Green Energy

Assemble-able Battery

SDA10-4820



System parameters

Model	SDA10-4820
Basic parameters	
Working temperature	-40℃~+55℃
Cooling	Natural conduction cooling
Dimension	350mm×450mm×150mm
Weight	≤25kg
Installation way	Wall hanging, pole holding, angle steel tower; flag, paper, etc.
Protection level	IP65
Performance parameter	
Rated voltage	48V
Rated capacity	20Ah
Voltage range	$V_{min} \geq 40V$, $V_{max} \leq 57.6V$
charging Voltage	57.6V
Charging Current	10A
Discharging current	20A
Function description	
Parallel communication	Available
Communication Interface	RS485×2
Alarm and protection	Over voltage, under voltage, short circuit, overload, reverse connection, over temperature, low temperature protection, etc.
Working environment	
Altitude	≤4000m
Humidity	5%~95%
Storage temperature	-20℃~+45℃
Battery management system	Yes

Declaration: This information is generally descriptive only and is not intended to make or imply any representation, guarantee or warranty with respect to any cells and batteries. Cell and battery designs/specifications are subject to modification without notice. Contact CHINASHOTO for the latest information.