

# Hybrid Power Solution



## Hybrid Power Solution

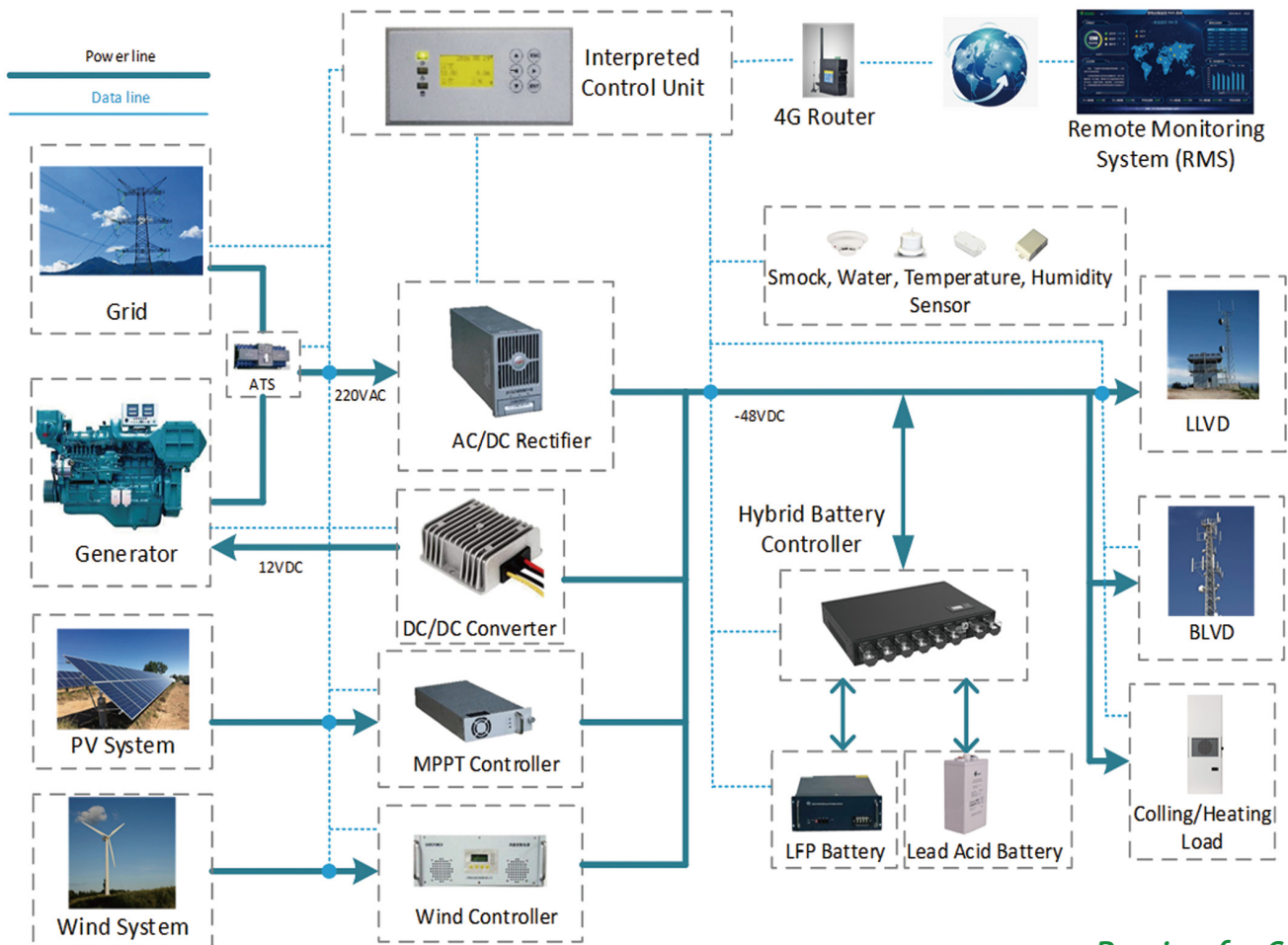
Shoto hybrid power system provides a turnkey solution for the communication base station. It is highly integrated power supply platform, which supports the integration of solar, wind, grid, generator, battery and other energy sources. The solution can be configured into three ways: solar, grid and generator hybrid system. The system supports the future expansion of the platform, and the integration of lead acid and lithium batteries altogether. Through intelligent strategy, the system can maximize annual saving and operate economically. The system is safe, reliable, intelligent and functional.



## Technical Advantage

- ▶ Remote monitoring, multi-level anti-theft enclosure
- ▶ Support multiple battery integration, high efficiency
- ▶ No need of on-site personnel, remote maintenance
- ▶ Optimize strategy and reduce OPEX cost
- ▶ Tailor-made application scenario
- ▶ Modular design, plug and play

## Typical System Topology



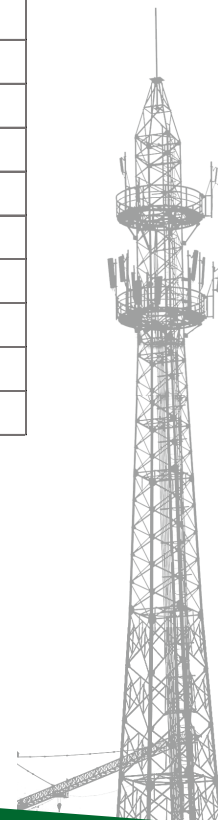
Passion for Storage and Green Energy

# Hybrid Power Solution



## System parameters

Solar PV plus Storage Hybrid System Technical specification(Typical)		
<b>System</b>	Type	Outdoor Indoor
	Capacity of PV System	24kW
	Capacity of Rectifier	50A*8
	Capacity of MPPT Converter	50A*8
	Controller	Shoto Integrated Control Unit
	Cooling	Aircon/HEX Aircon/HEX/Natural cooling
	Installation Mode	Ground-mounted
	Cabling Mode	From the bottom From the top
	Maintenance Mode	From the front
	Noise Level	<65dBA@1.5m, satisfy GR 487 standard
	Battery Type	Lead acid/LFP
<b>AC Distribution</b>		
<b>DG or Grid Input</b>	ATS Type	ATS-63A
	Input Mode	200-240/346-415Vac, Three phase, 50/60Hz
	AC SPD	50kA
<b>DC Distribution</b>		
	Output Voltage	-48Vdc
	Maximum Capacity	500A
	Battery Fuse	300A*2
	L LVD	80A*2, 63A*2
	BLVD	63A*2, 32A*2, 16A*1
	DC SPD	20kA
<b>Environment</b>	Operating Temperature	-20°C~50°C 0°C~45°C
	Storage Temperature	-40°C~70°C
	Humidity	5%-95%, no condensation
	Altitude	0-4000m, 10%capacity reduction forever y1000m rise above 4000m
<b>Protection Degree</b>	Equipment Cabinet	IP55 IP20
	Battery Cabinet	IP55 optional



Declaration: This information is generally descriptive only and is not intended to make or imply any representation, guarantee or warranty with respect to any cells and batteries. Cell and battery designs/specifications are subject to modification without notice. Contact CHINASHOTO for the latest information.

Welcome to Visit : [www.chinashoto.com](http://www.chinashoto.com)