

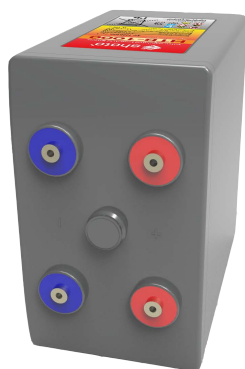
HTB Series

High Temperature Battery

HTB-1000



shoto`



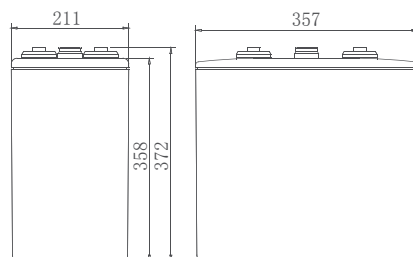
Main Applications

- ▣ High temperature environment (35°C)
- ▣ O°-grid & bad-grid environment
- ▣ Renewable energy (wind & solar) site
- ▣ Hybrid telecom site

Benefits

- ▣ Reduce operational cost (less cooling consumption)
- ▣ Excellent deep cycling performance
- ▣ Reduce CO₂ emission
- ▣ Secure operation under high temperature up to 55°C

Dimensions



Technical Parameters

Nominal Voltage	2 V
Capacity	1000 Ah @10hr to 1.80 V @ 25°C(77°F) 1030 Ah @10hr to 1.80 V @ 35°C(95°F)
Weight	68.6 kg (151.24 lbs)
Dimensions	Length: 357 mm (14.06 in) Width: 211 mm (8.31 in) Height: 358 mm (14.09 in) Total height: 372 mm (14.65 in)
Internal Resistance (full charged)	0.24 mΩ
Short- circuit current	11000 A
Self Discharge @ 35°C(95°F)	Less than 7% after 90 days storage
Operating Temperature Range	Discharge: -40°C ~ 65°C(-40°F ~ 149°F) Charge: -20°C ~ 45°C(-4°F ~ 113°F) Storage: -20°C ~ 40°C(4°F ~ 104°F)
Recommended Operating Temperature	15°C ~ 35°C(59°F ~ 95°F)
Recommended Charging Current	150 A
Maximum Charging Current	250 A
Charging Voltage @35°C(95°F)	Float: 2.23 V/cell Equalize: 2.30 V/cell
Terminal	M8
Container Materials	High Temp ABS /High Temp ABS V0 (Optional)
Capacity A ^{ected} by Temperature(C ₁₀)	106%@ 40°C(104°F) 85%@ 0°C(32°F) 60%@ -20°C(-4°F)
Design life @35°C(95°F)	15 years

Certification

- ISO 9001
- ISO 14001
- GB/T 28001
- UL
- CE

Technical Features

- ▣ Operating temperature range -20°C to +65°C
- ▣ Best performance for continuous operation up to 35°C
- ▣ Extend service life under high temperature
- ▣ Excellent over discharge recovery capability
- ▣ Long life design for cyclic or float application

HTB Series

High Temperature Battery

HTB-1000



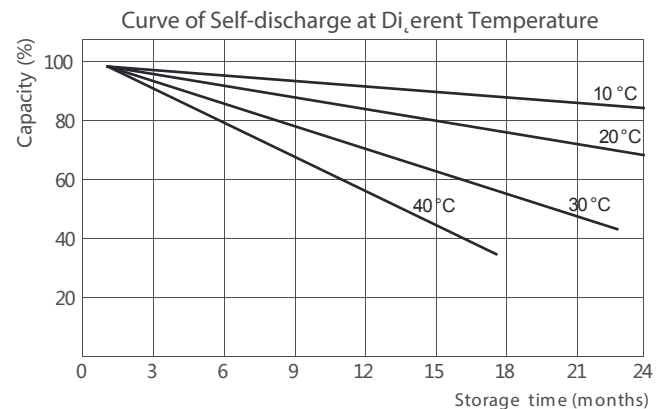
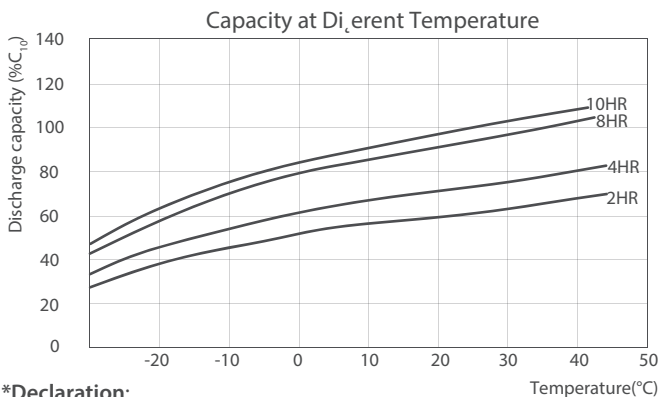
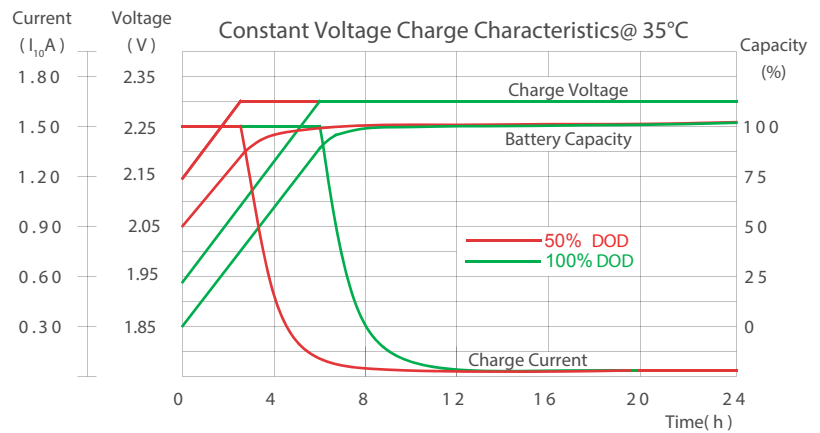
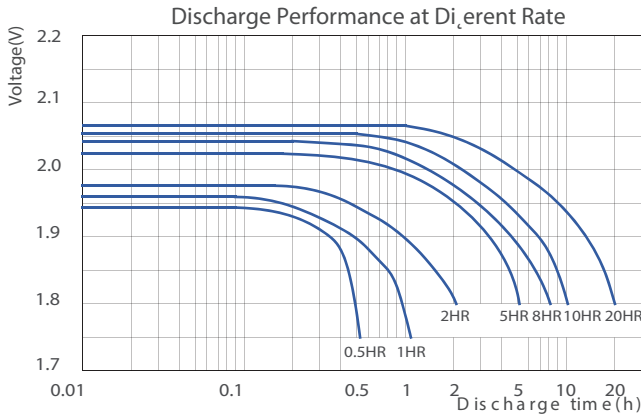
Constant Current Discharge Characteristics Unit: A (35°C, 95°F)

F.V/Time	15min	30min	1hr	3hr	5hr	8hr	10hr	12hr	20hr	24hr	48hr	72hr	120hr
1.70V	1276	913	584	275	192	130.7	108.0	91.7	58.8	50.0	25.1	17.3	10.9
1.75V	1222	848	557	267	185	129.0	106.3	90.4	58.1	49.4	24.7	17.0	10.7
1.80V	1079	794	537	259	181	126.2	104.7	89.0	57.1	48.5	24.3	16.7	10.5
1.83V	1007	750	511	252	177	124.2	103.7	88.2	56.1	47.7	23.9	16.5	10.4
1.85V	935	706	484	245	173	122.2	102.7	87.3	55.1	46.8	23.5	16.2	10.2
1.90V	748	569	418	207	145	102.7	84.8	72.1	48.8	41.5	22.9	15.8	9.9

Constant Power Discharge Characteristics Unit: W/Cel (35°C, 95°F)

F.V/Time	15min	30min	1hr	3hr	5hr	8hr	10hr	12hr	20hr	24hr	48hr	72hr	120hr
1.70V	2152	1693	1078	545	363	245.7	213.4	193.4	114.8	98.1	52.8	36.3	23.0
1.75V	2072	1636	1040	523	350	239.4	210.0	190.0	113.6	96.5	51.7	35.6	22.6
1.80V	1984	1423	1020	511	348	236.8	205.2	185.4	112.6	95.7	50.8	34.8	22.2
1.83V	1885	1374	1008	498	344	234.3	202.3	183.9	109.6	93.2	49.9	34.2	21.8
1.85V	1787	1325	997	486	340	231.8	199.4	182.5	106.7	90.7	48.9	33.7	21.4
1.90V	1439	1064	864	414	289	205.2	169.0	153.7	96.9	82.3	45.8	31.3	19.9

Performance Curve



*Declaration:

This information is generally descriptive only and is not intended to make or imply any representation, guarantee or warranty with respect to any cells and batteries. Cell and battery designs/specifications are subject to modification without notice. Contact CHINASHOTO for the latest information

Welcome to Visit: www.chinashoto.com